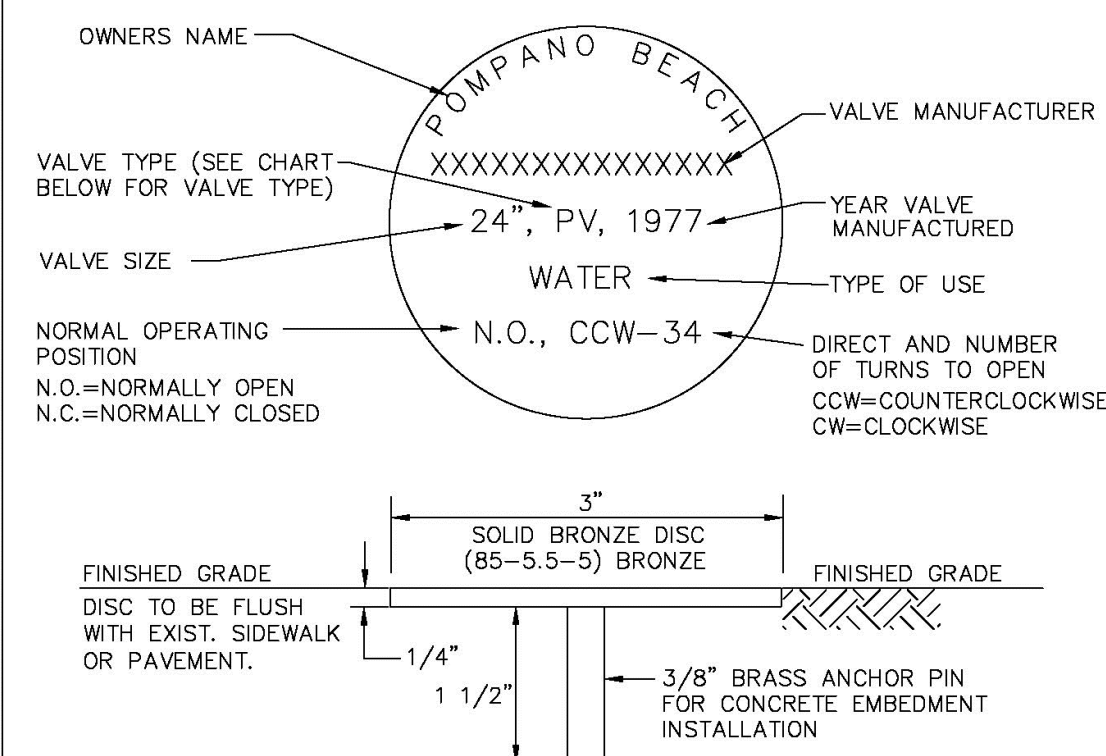


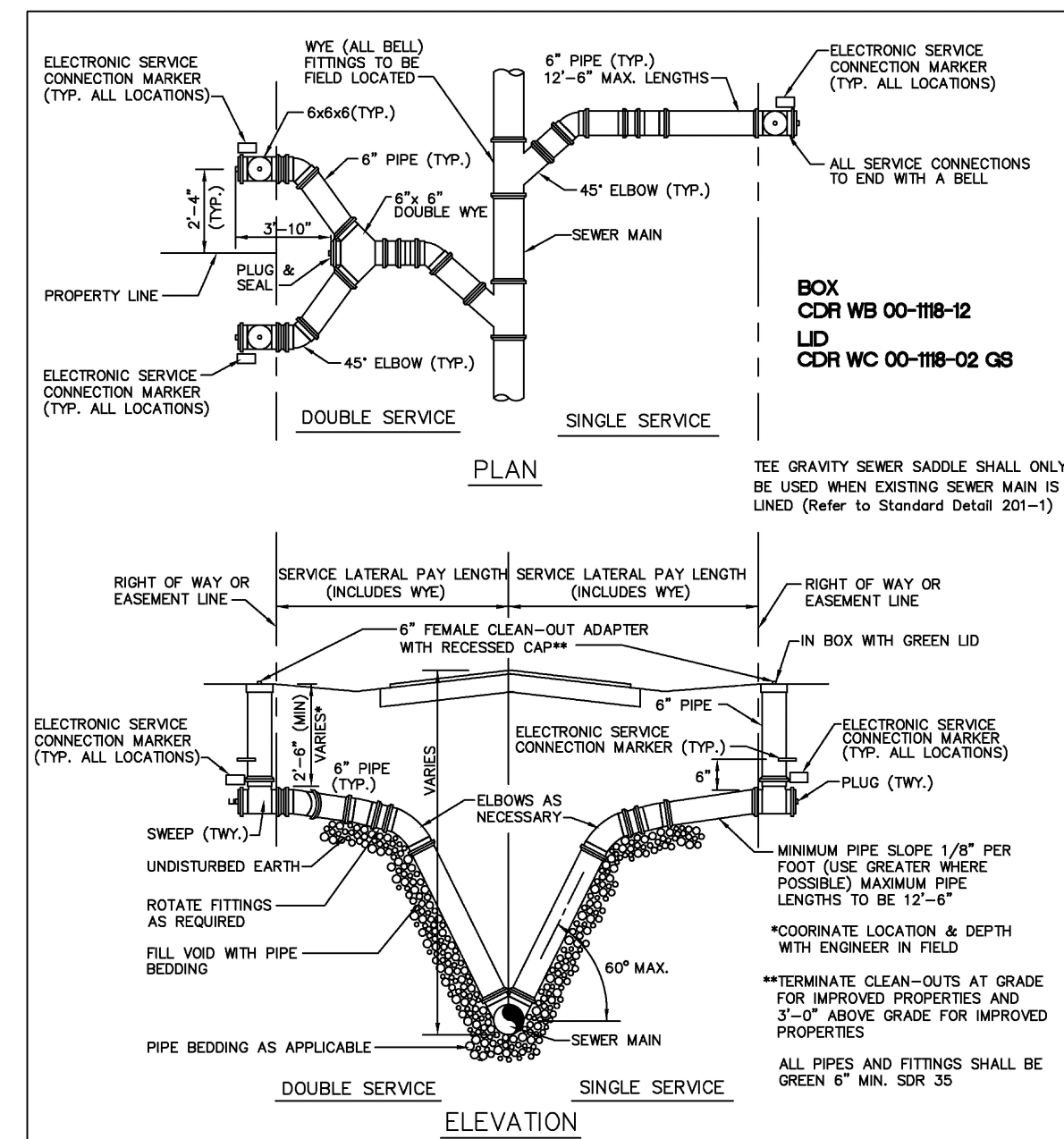
TYPICAL METER BANK

USE MEGALUGS AT ALL PIPE JOINTS		ALL D.I.P. TO BE PAINTED BLACK ON THE TOP HALF OF PIPE.	
ENGINEERING STANDARDS 2025			
REVISIONS		TYPICAL METER BANK	
BY	DATE	ENGINEERING DIVISION CITY OF POMPAÑO BEACH	
TCW	02-09		
S.S.	06-2011		
S.S.	11-2012		
SCALE: N.T.S.		DATE: MAY 2022 DWG. NO. 113-1	



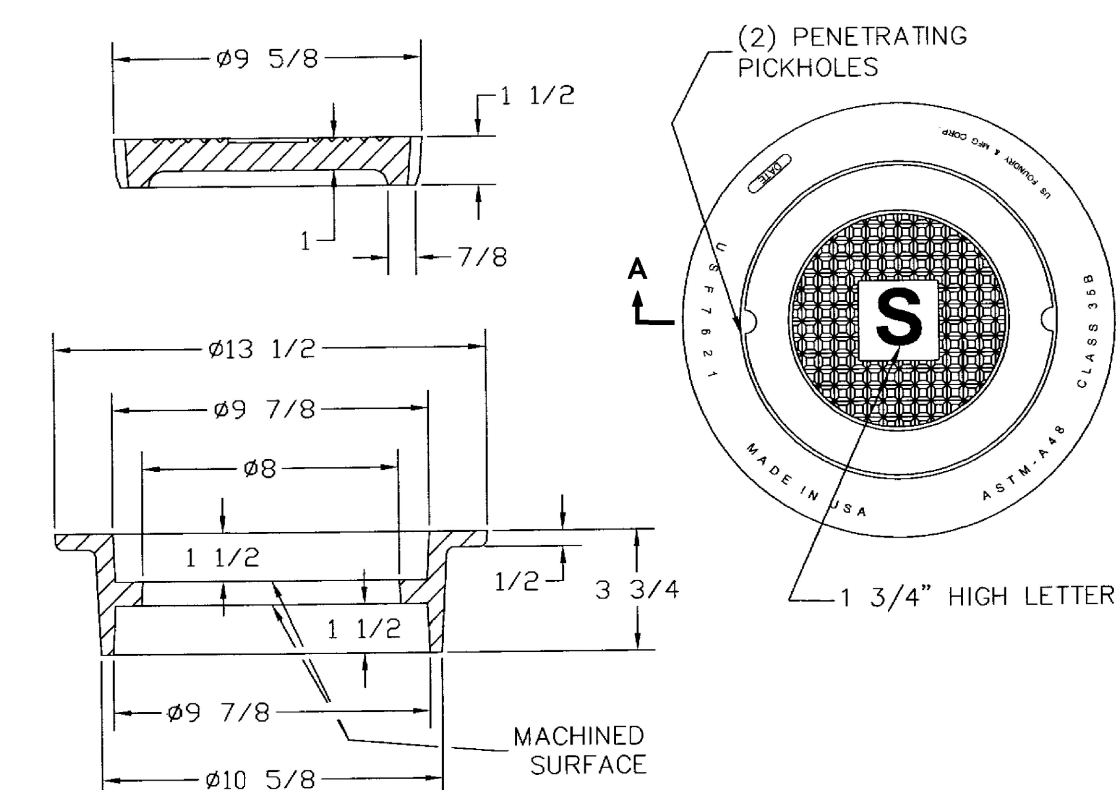
UNDERGROUND VALVE IDENTIFICATION MARKER

ENGINEERING STANDARDS 2025			
REVISIONS BY DATE S.S. JUNE 2006 T.W. 11-2007 T.W. 02-2008 S.S. 1-24-12		ENGINEERING DIVISION CITY OF POMPANO BEACH SCALE: N.T.S.	UNDERGROUND VALVE IDENTIFICATION MARKER DATE: FEB. 2022 DWG. NO. 115-1



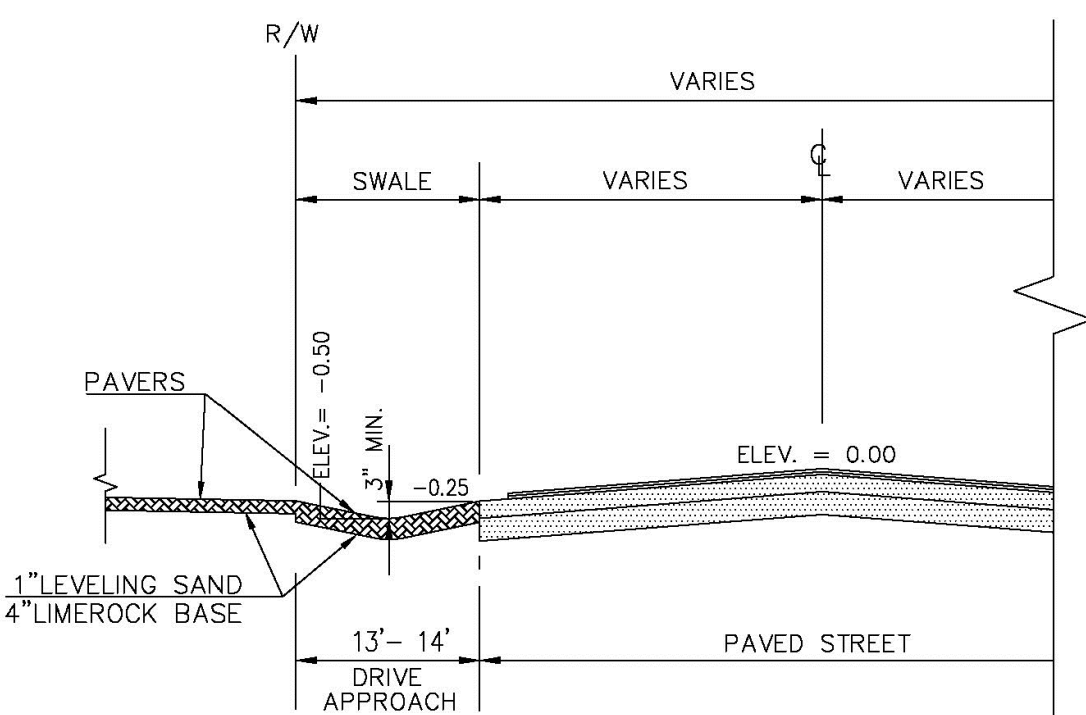
SERVICE LATERALS WITH RISERS

ENGINEERING STANDARDS 2025				
REVISIONS		ENGINEERING DIVISION CITY OF POMPANO BEACH	SERVICE LATERALS	
BY	DATE			DATE: JUNE 2022 DWG. NO. 200-1
T.W.	11-2007			
S.S.	01/27/12			
S.S.	07/10/12			
S.S.	02/05/16			
SCALE: N.T.S.				



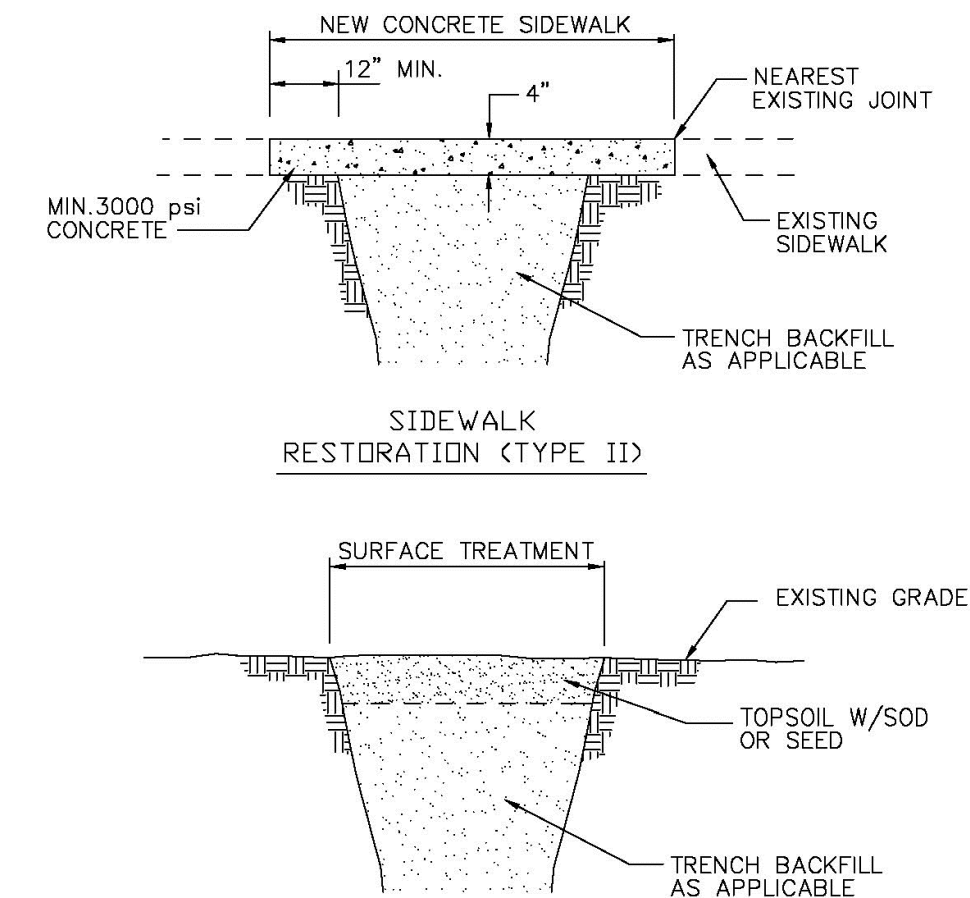
SEWER BOX AND COVER - HEAVY TRAFFIC

ENGINEERING STANDARDS 2025			
REVISIONS		ENGINEERING DIVISION CITY OF POMPANO BEACH	SEWER BOX AND COVER HEAVY TRAFFIC
BY	DATE		
S.S.	12/06/18		
		SCALE: N.T.S.	DATE: JUNE 2022 DWG. NO. 210-3



TYP. PAVERS DRIVEWAY SWALE SECTION

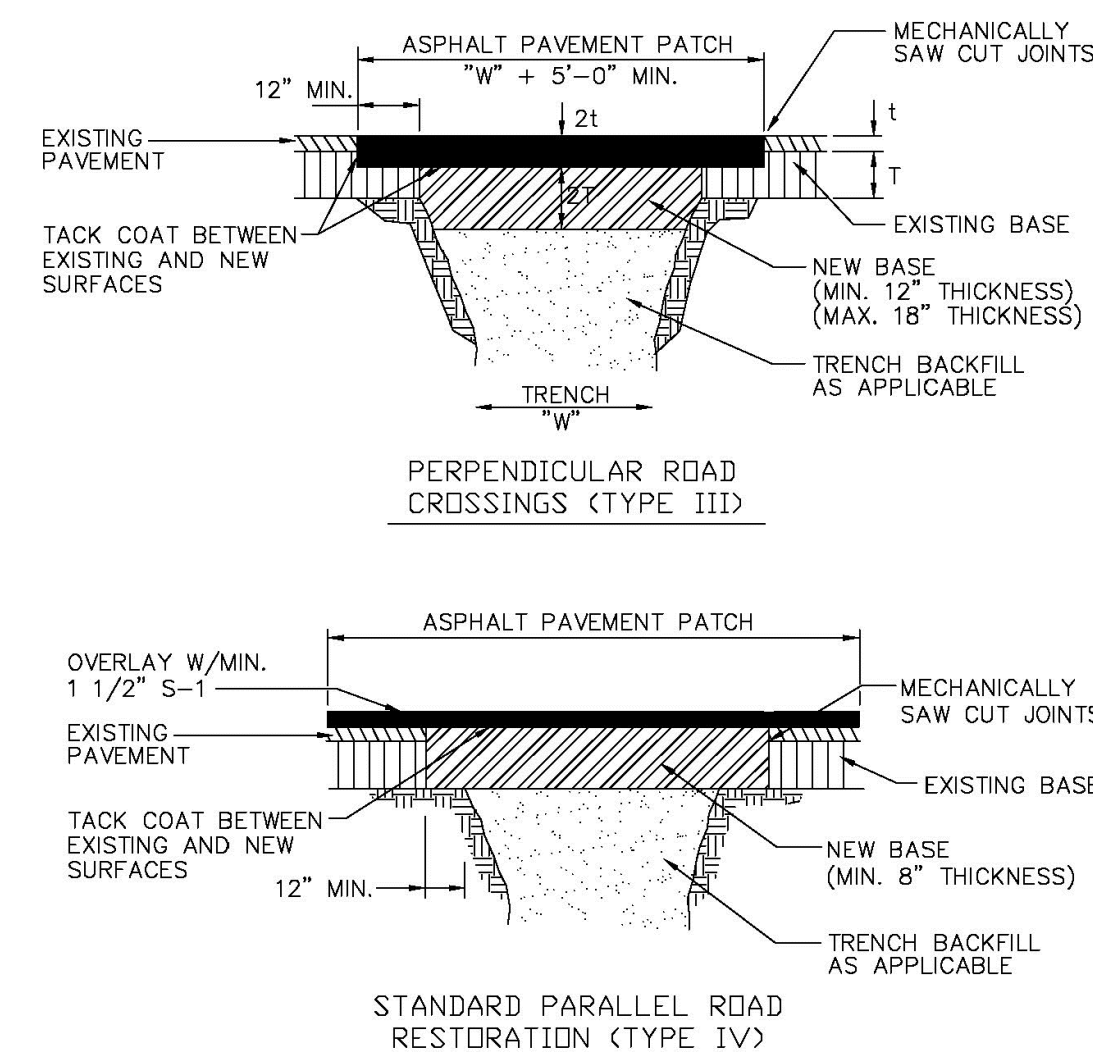
ENGINEERING STANDARDS 2025			
REVISIONS		ENGINEERING DIVISION CITY OF POMPAÑO BEACH	TYP. PAVERS DRIVEWAY SWALE
BY	DATE		
A.S.	10/22		
SCALE: N.T.S.		DATE: OCT 2022	305-3
		DWG. NO.	



SWALE
RESTORATION (TYPE I)

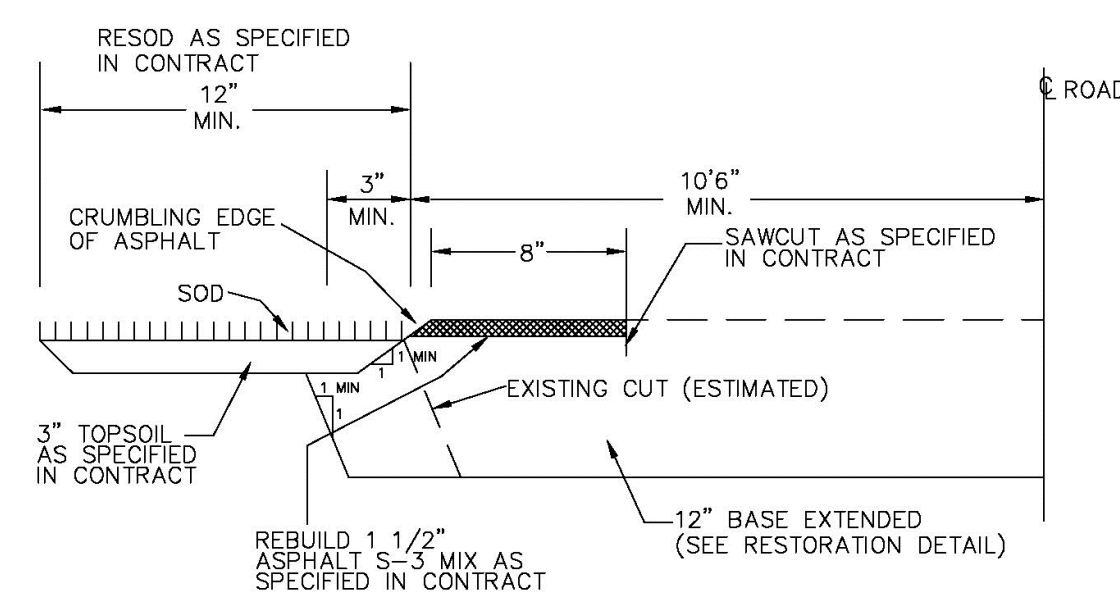
SURFACE RESTORATION

ENGINEERING STANDARDS 2025			
REVISIONS		ENGINEERING DIVISION CITY OF POMPANO BEACH	SURFACE RESTORATION
BY	DATE		
S.S.	5/05/10		
SCALE: N.T.S.		DATE: MAY 2022 DWG. NO. 306-1	



SURFACE RESTORATION

ENGINEERING STANDARDS 2025			
REVISIONS		ENGINEERING DIVISION CITY OF POMPANO BEACH	SURFACE RESTORATION
BY	DATE		
		SCALE: N.T.S.	DATE: MAY 2022 DWG. NO. 306-2



EDGE OF PAVEMENT RESTORATION

ENGINEERING STANDARDS 2025			
REVISIONS		ENGINEERING DIVISION CITY OF POMPAÑO BEACH	EDGE OF PAVEMENT RESTORATION
BY	DATE		
		SCALE: N.T.S.	DATE: MAY 2022
			DWG. NO. 306-4

ATTENTION IS DIRECTED TO THE FACT
THAT THESE PLANS MAY HAVE BEEN
REDUCED IN SIZE BY REPRODUCTION
THIS MUST BE CONSIDERED WHEN
OBTAINING SCALED DATA.

Sunshine 811
Call 811 or www.sunshine811.com two full business days before digging to have utilities located and marked.
Check positive response codes before you dig!

OWNERSHIP AND USE OF THESE DOCUMENTS & SPECIFICATIONS ARE INSTRUMENT
SERVICE AND SHALL REMAIN THE PROPERTY OF GLOBE ENGINEERING, INC. WHETHER
THE PROJECT THEY ARE MADE FOR IS EXECUTED OR NOT.

THESE DOCUMENTS, DETAILS, & SPECIFICATIONS SHALL NOT BE USED BY ANYONE
ON ANY OTHER PROJECT OR FOR ADDITIONS TO THIS PROJECT BY OTHERS, EXCEPT
BY AGREEMENT IN WRITING BY GLOBE ENGINEERING, INC.

THIS PLAN MAY NOT BE REPRODUCED WITHOUT WRITTEN PERMISSION FROM
GLOBE ENGINEERING, INC.
© 2025 - GLOBE ENGINEERING, INC.

TOWNHOMES

3305 SE 5TH STREET
POMPANO BEACH, FL 33062

CITY STANDARD DETAILS

Globe Engineering, Inc.

Civil Engineering - Land Planning - Construction Management

Phone: 954-316-7628
4839 SW 148 Avenue, Suite 507

FBPE REGISTRY No. 8604

THIS ITEM HAS BEEN DIGITALLY SIGNED
AND SEALED BY MARTIN PILOTE USING
A DIGITAL SIGNATURE AND DATE.
PRINTED COPIES OF THIS DOCUMENT
ARE NOT CONSIDERED SIGNED AND
SEALED AND THE SIGNATURE MUST BE
VERIFIED ON ANY ELECTRONIC COPIES.
PRINTED COPIES ARE ONLY VALID IF IT
INCLUDES AN INK ORIGINAL HAND



DESIGNED: MP	DATE:
--------------	-------

DRAWN:	SKC	2/9/2026
--------	-----	----------

PROJECT NO:

2025-011

DRAWING NAME:

C-9

SHEET NO:

C-9 OF 11

© 2025 GLOBE ENGINEERING, INC.